

UN700D1 Specifications

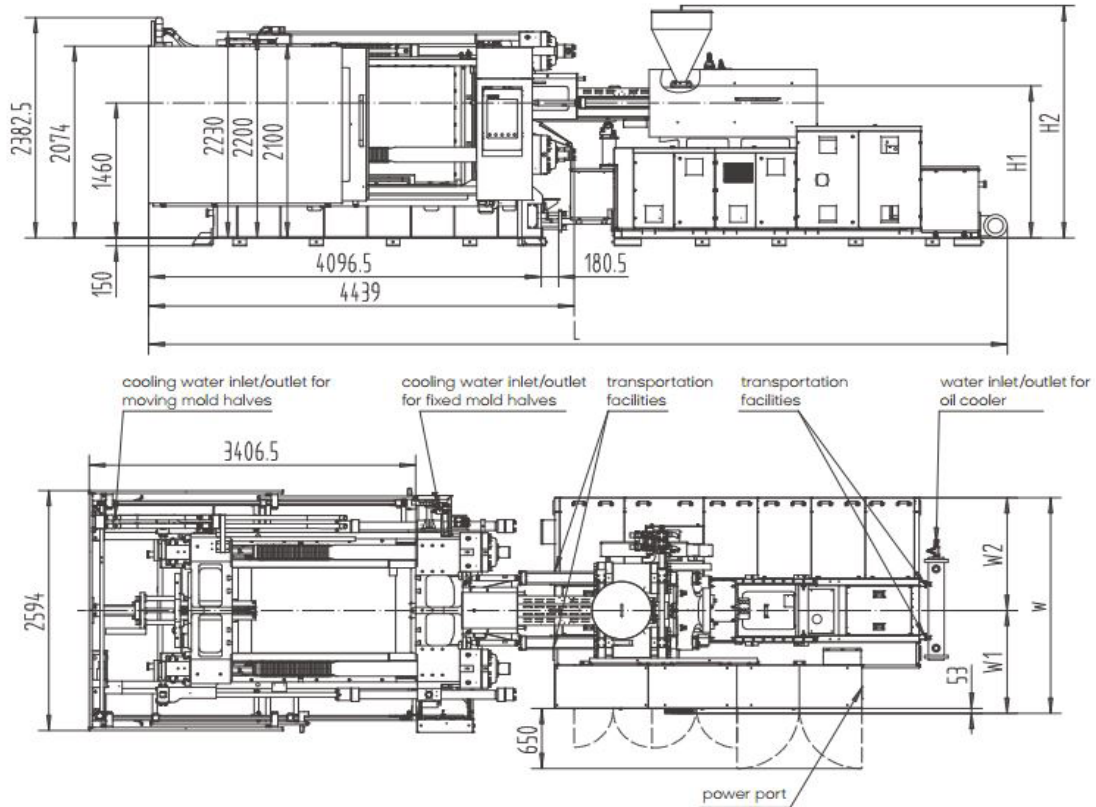
FEATURES

- European, oil-cooled, two-headed motor-driven servo drive delivers fast response and maximise energy efficiency
- Austrian KEBA control with dual CPU is stable, fast & accurate with 12" TFT colour touch screen display
- Based on European design technology
- High rigidity clamping unit delivers stability & accuracy, combined with uniform stress distribution on the tie bars
- Rexroth highly responsive dual proportional valves on clamping unit offers accurate repeatability
- L-shape guide rails deliver platen movement accuracy up to 0.05mm
- Mould open position accurate to $\pm 0.2\text{mm}$
- Tie bars independent of moving platen offers precision & speed
- Dry cycle times faster than toggle lock machines
- Small footprint compared to traditional three platen design
- Low pressure & highly sensitive mould protection
- Integrated linear guide rails on injection unit offer low resistance and accuracy
- Repeatability of part weight $\leq 3\%$
- Durable ceramic heater bands
- Time, position or pressure switchover for holding phase start
- Ultrasonic displacement sensor
- Central lubrication for injection unit
- European oil seals & guide rings
- Double core pull
- Double air blast circuit
- Euromap robot interface & Euromap mounting
- Hydraulic ejector
- T-Slot platen
- Auto mould height adjustment
- Oil pre-heating
- IP54 electrical enclosure
- Precise filtration and independent cooling system
- Service, warranty & parts supported by our in-house engineers

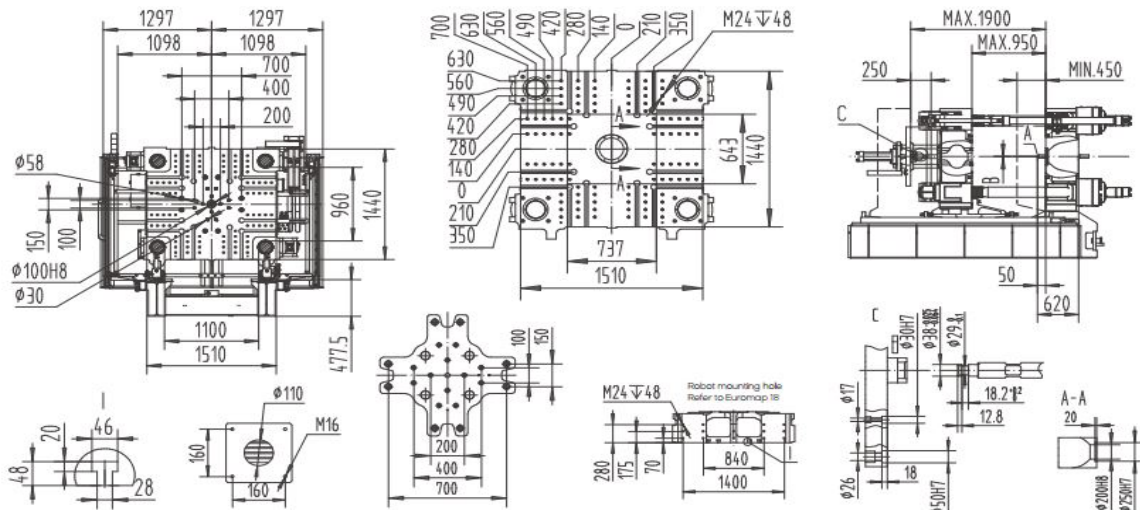


INJECTION UNIT		2695			3330			4800				6800				
		A	B	C	A	B	C	A	B	C	D	A	B	C	D	
Screw diameter	mm	68	76	84	76	84	92	84	92	100	108	92	100	108	116	
Shot volume	cm ³	1198	1497	1829	1678	2050	2460	2217	2659	3142	3664	3191	3770	4397	5073	
Shot weight	g	1103	1377	1683	1544	1886	2263	2039	2446	2890	3371	2936	3468	4045	4667	
Injection pressure	bar	2250	1800	1470	1990	1620	1360	2180	1810	1540	1340	2130	1800	1540	1340	
Screw L:D ratio		22.3	20	20	22.1	20	20	21.9	20	21.6	20	21.7	22	21.5	20	
Injection rate	cm ³ /s	383	478	584	430	526	632	520	624	737	860	615	726	847	980	
Max. injection speed	mm/s	105			95			93.9				92.5				
Screw stroke	mm	330			370			400				480				
Max. screw speed	r/min	184			147			154				145				
Barrel heating zone no.	PCS	6			6			6				7				
CLAMPING UNIT																
Clamping force	kN	7000														
Opening force	kN	500														
Platen size	mm	1510 x 1440														
Distance between tie-bars	mm	1100 x 960														
Mould thickness (min-max)	mm	450 - 950														
Opening stroke	mm	1450 / 950														
Max. daylight	mm	1900														
Ejector force	kN	110														
Ejector stroke	mm	250														
Ejector number	PCS	21														
ELECTRICAL & HYDRAULIC UNITS																
System pressure	MPa	17.5 / 30			17.5 / 30			17.5 / 30				17.5 / 30				
Pump motor	kW	60 + 5.5			60 + 5.5			66 + 5.5				89 + 7.5				
Total power	kW	91.9	91.9	96.4	98.6	98.6	101.7	108.6	108.6	118.5	118.5	143.5	143.5	153.1	153.1	
Heater power	kW	26.4	26.4	30.9	33.1	33.1	36.2	37.14	37.14	47	47	47	47	56.6	56.6	
GENERAL																
Oil tank capacity	L	750			750			1000				1150				
Machine dimensions (LxWxH)	m	7.9 x 2.6 x 2.7			7.9 x 2.6 x 2.5			9 x 2.6 x 2.5				9 x 2.7 x 2.5				
Machine weight	T	16 + 5			16 + 5.5			16 + 6.5				16 + 8.5				
Max. mould weight	T	11			11			11				11				

MACHINE DIMENSIONS



PLATEN DRAWINGS



Model	A	B	L	H1	H2	W	W1	W2	Main power cord size	Full-load current	Bearing capacity of foundation	Mold cooling water parts	Cooling water flow (mold excluded)	Cooling water pressure	Compressed air pressure
	mm	mm	mm	mm	mm	mm	mm	mm	mm ²	A	t/m ²	n×L/min	L/min	bar	bar
UN700D1-IU2695	SR15	φ4	7833	1757	2622	2198	1063	1135	70	176.74	7.5	(8+8)×11	100	3~4	5~6
UN700D1-IU3330	SR15	φ4	7833	1635	2500	2198	1063	1135	70	186.89	7.5	(8+8)×11	100	3~4	5~6
UN700D1-IU4800	SR15	φ4.5	8957	1645	2510	2333	1113	1220	70	215.49	7.5	(8+8)×11	100	3~4	5~6
UN700D1-IU6800	SR15	φ4.5	8957	1645	2510	2711	1352	1359	75	259.84	7.5	(8+8)×11	100	3~4	5~6