

# UN500D1 Specifications

## FEATURES

- European, oil-cooled, two-headed motor-driven servo drive delivers fast response and maximise energy efficiency
- Austrian KEBA control with dual CPU is stable, fast & accurate with 12" TFT colour touch screen display
- Based on European design technology
- High rigidity clamping unit delivers stability & accuracy, combined with uniform stress distribution on the tie bars
- Rexroth highly responsive dual proportional valves on clamping unit offers accurate repeatability
- L-shape guide rails deliver platen movement accuracy up to 0.05mm
- Mould open position accurate to  $\pm 0.2\text{mm}$
- Tie bars independent of moving platen offers precision & speed
- Dry cycle times faster than toggle lock machines
- Small footprint compared to traditional three platen design
- Low pressure & highly sensitive mould protection
- Integrated linear guide rails on injection unit offer low resistance and accuracy
- Repeatability of part weight  $\leq 3\%$
- Durable ceramic heater bands
- Time, position or pressure switchover for holding phase start
- Ultrasonic displacement sensor
- Central lubrication for injection unit
- European oil seals & guide rings
- Double core pull
- Double air blast circuit
- Euromap robot interface & Euromap mounting
- Hydraulic ejector
- T-Slot platen
- Auto mould height adjustment
- Oil pre-heating
- IP54 electrical enclosure
- Precise filtration and independent cooling system
- Service, warranty & parts supported by our in-house engineers



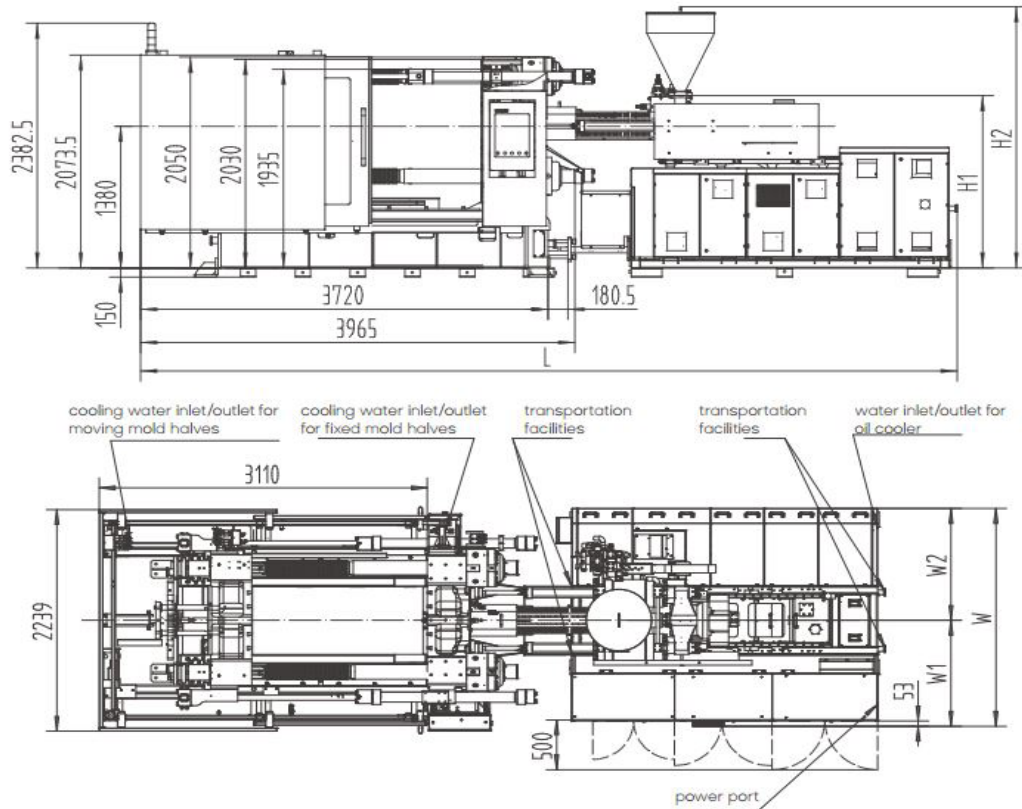
INJECTION UNIT		1885			2695			3330			4800			
		A	B	C	A	B	C	A	B	C	A	B	C	D
Screw diameter	mm	60	68	76	68	76	84	76	84	92	84	92	100	108
Shot volume	cm <sup>3</sup>	834	1071	1338	1198	1497	1829	1678	2050	2460	2217	2659	3142	3664
Shot weight	g	767	986	1231	1103	1377	1683	1544	1886	2263	2039	2446	2890	3371
Injection pressure	bar	2260	1760	1410	2250	1800	1470	1990	1620	1360	2180	1810	1540	1340
Screw L:D ratio		22.6	20	20	22.3	20	20	22.1	20	20	21.9	20	21.6	20
Injection rate	cm <sup>3</sup> /s	322	414	517	383	478	584	430	526	632	516	619	730	853
Max. injection speed	mm/s	114			105			95			93.9			
Screw stroke	mm	295			330			370			400			
Max. screw speed	r/min	250			184			147			154			
Barrel heating zone no.	PCS	5			6			6			6			

CLAMPING UNIT														
Clamping force	kN	5000												
Opening force	kN	390												
Platen size	mm	1270 x 1260												
Distance between tie-bars	mm	910 x 830												
Mould thickness (min-max)	mm	350 - 950												
Opening stroke	mm	1300 / 750												
Max. daylight	mm	1650												
Ejector force	kN	110												
Ejector stroke	mm	250												
Ejector number	PCS	21												

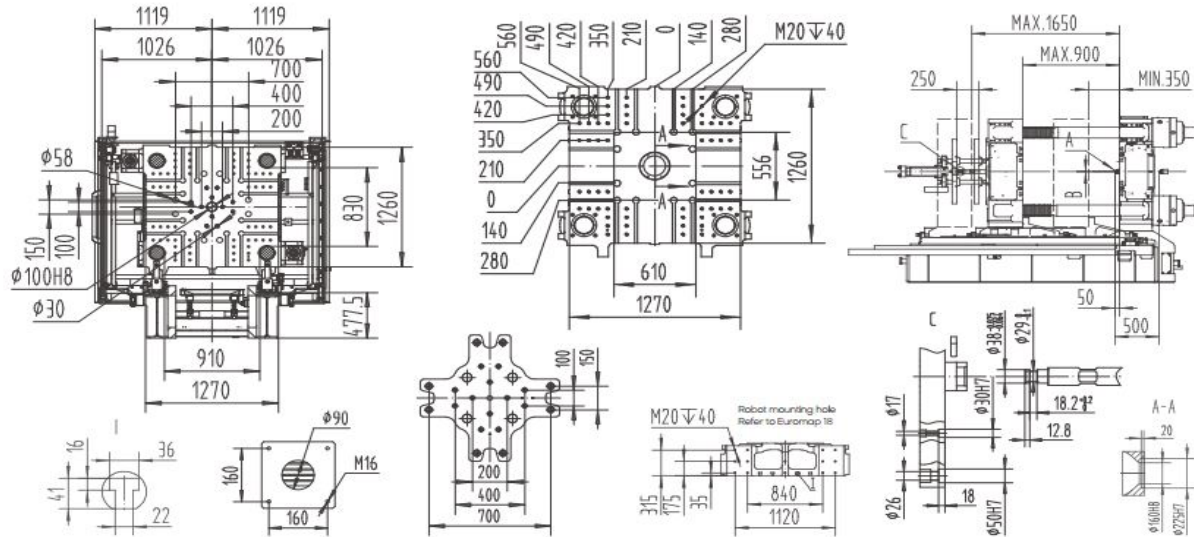
ELECTRICAL & HYDRAULIC UNITS														
System pressure	MPa	17.5 / 30			17.5 / 30			17.5 / 30			17.5 / 30			
Pump motor	kW	55.6 + 5.5			60 + 5.5			60 + 5.5			66 + 5.5			
Total power	kW	83.3	83.3	85.7	91.9	91.9	96.4	98.6	98.6	101.7	108.6	108.6	118.5	118.5
Heater power	kW	22.2	22.2	24.6	26.4	26.4	30.9	33.1	33.1	36.2	37.14	37.14	47	47

GENERAL														
Oil tank capacity	L	650			750			750			1000			
Machine dimensions (LxWxH)	m	7.5 x 2.3 x 2.4			7.5 x 2.3 x 2.6			7.5 x 2.3 x 2.67			8.6 x 2.4 x 2.5			
Machine weight	T	12 + 4			12 + 5			12 + 5.5			12 + 7.8			
Max. mould weight	T	8			8			8			8			

## MACHINE DIMENSIONS



## PLATEN DRAWINGS



Model	A	B	L	H1	H2	W	W1	W2	Main power cord size	Full-load current	Bearing capacity of foundation	Mold cooling water ports	Cooling water flow (mold excluded)	Cooling water pressure	Compressed air pressure
	mm	mm	mm	mm	mm	mm	mm	mm	mm <sup>2</sup>	A	t/m <sup>2</sup>	nxL/min	L/min	bar	bar
UN500D1-IU1885	SR10	$\phi 3.5$	7456	1617	2360	2198	1063	1135	70	161.46	7.5	(8+8) $\times$ 11	100	3~4	5~6
UN500D1-IU2695	SR15	$\phi 4$	7456	1677	2542	2198	1063	1135	70	176.74	7.5	(8+8) $\times$ 11	100	3~4	5~6
UN500D1-IU3330	SR15	$\phi 4$	7456	1555	2420	2198	1063	1135	70	186.89	7.5	(8+8) $\times$ 11	100	3~4	5~6
UN500D1-IU4800	SR15	$\phi 4.5$	8580	1565	2430	2333	1113	1220	70	215.49	7.5	(8+8) $\times$ 11	100	3~4	5~6