

# EG Low Speed Granulator (Beside the press model)

## DESIGN FEATURES

This range of small, beside the press low speed granulators are ideally suited to granulate sprues or small components which can be fed by hand, or from a picker or robot. The staggered blade design improves granulation efficiency and in the event of blade damage from foreign objects, only the damaged section needs to be replaced or sharpened. For UK models, the blades are made from SKD-11 material which is suitable for granulating glass fibre filled parts. The low rotor speed reduces noise and dust.

## SAFETY & NOISE

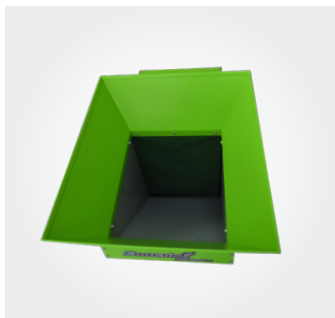
The hopper is double skinned to reduce noise levels. Operator safety is provided by fitting a tamper proof microswitch operated by a slow bolt. This ensures the rotor has stopped turning by the time the operator can open the hopper to get access to the cutter chamber. A similar safety circuit is fitted to the removable collection box.

## GRANULATE EVACUATION OPTIONS

The granulate can be evacuated by either a simple sliding collection box, a collection box for connecting to a hopper loader with a level control paddle inside, or a continuously running blower motor and cyclone.

## QUALITY

All Enmair products are manufactured to a high standard. European electrical components are used as standard. The owner's manual is concise and contains all operating, maintenance, and spare parts information.



Sound proofed hopper ready to be fed by hand, or robot.



Tamper proof safety switches to prevent injury or accidental damage.



Granule collection box with level control.



The staggered blades are angled to help improve efficiency.

## Technical Data

Model	EG-240	EG-300	EG-360	EG-360H
Motor Power (kW)	1.5	2.2	3.0	4.0
Rotating Speed (rpm)	230	230	230	230
Material of Blades (DC53)	SKD11			
Type of Blades	Staggered / Adjustment-Free			
Nuber of Fixed Blades	2			
Number of Rotating Blades	12	15	18	18
Cutting Chamber (mm)	180 x 240	180 x 300	180 x 360	180 x 360
Max. Throughput Capacity (kg/hr)	40	50	60	70
Noise Level dB (A)	80 ~ 90	80 ~ 90	80 ~ 90	80 ~ 90
Dia. of Screen Mesh (mm)	√ (Φ6)	√ (Φ6)	√ (Φ6)	√ (Φ6)
30-sec. Instant Recycler	•	•	•	•
Dust Separator (with Instant Recycling)	•	•	•	•
Level Detector	•	•	•	•
Proportional Valve	•	•	•	•
Special Screens (mm)	•	•	•	•
Manual Storage Bin	•	•	•	•
Dimensions (LxWxH) (mm)	660 x 470 x 1280	660 x 530 x 1280	660 x 590 x 1280	660 x 590 x 1280
Weight (kg)	180	210	230	260

1) √ = standard, • = optional

2) "H" refers to higher motor power. "S" refers to smaller motor power. "C" refers to staggered blades.

3) For stainless steel made feed port and manual storage bin, plus "R" at model behind.

4) Max. capacity of the machine is subject to diameter of the screen hole and composition of the material. Continually with PET preforms.

5) Noise level will vary with different materials and motor types.

6) For avoiding plastic to adhibit different materials and motor types.

7) Power supply: 3Φ, 230 / 400 / 460 / 575V, 50 / 60 Hz.



Good access for cleaning and maintenance.



Low speed granulator shown with (optional) blower fitted.

