

# UN700D1 Specifications

## FEATURES

- European, oil-cooled, two-headed motor-driven servo drive delivers fast response and maximise energy efficiency
- Austrian KEBA control with dual CPU is stable, fast & accurate with 12" TFT colour touch screen display
- Based on European design technology
- High rigidity clamping unit delivers stability & accuracy, combined with uniform stress distribution on the tie bars
- Rexroth highly responsive dual proportional valves on clamping unit offers accurate repeatability
- L-shape guide rails deliver platen movement accuracy up to 0.05mm
- Mould open position accurate to  $\pm 0.2\text{mm}$
- Tie bars independent of moving platen offers precision & speed

- Dry cycle times up to 55% faster than toggle lock machines
- Small footprint compared to traditional three platen design
- Low pressure & highly sensitive mould protection
- Integrated linear guide rails on injection unit offer low resistance and accuracy
- Repeatability of part weight  $\leq 3\%$
- Durable ceramic heater bands
- Time, position or pressure switchover for holding phase start
- Ultrasonic displacement sensor
- Central lubrication for injection unit
- European oil seals & guide rings
- Double core pull



- Double air blast circuit
- Euromap robot interface & Euromap mounting
- Hydraulic ejector
- T-Slot platen
- Auto mould height adjustment
- Oil pre-heating
- IP54 electrical enclosure
- Precise filtration and independent cooling system
- Service, warranty & parts supported by our in-house engineers

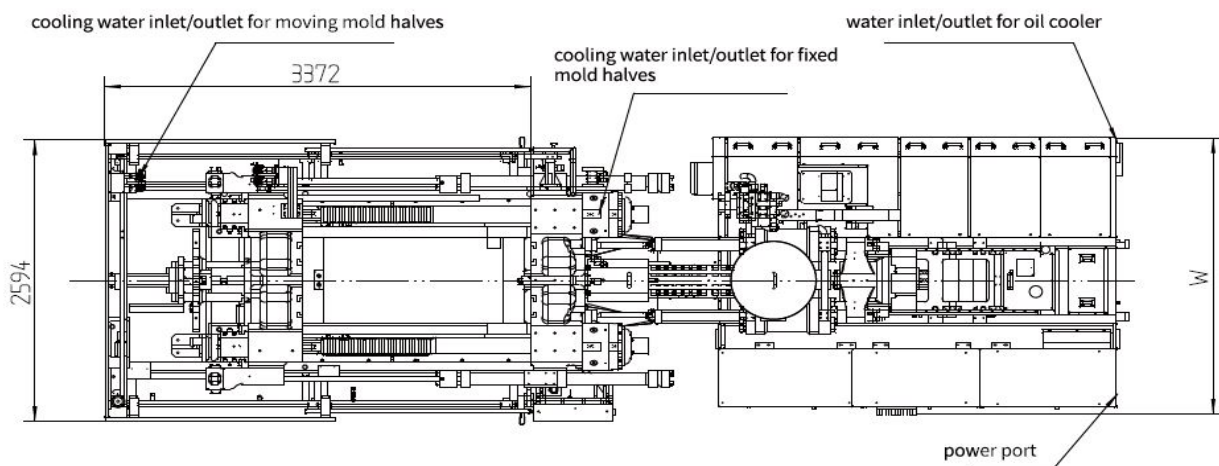
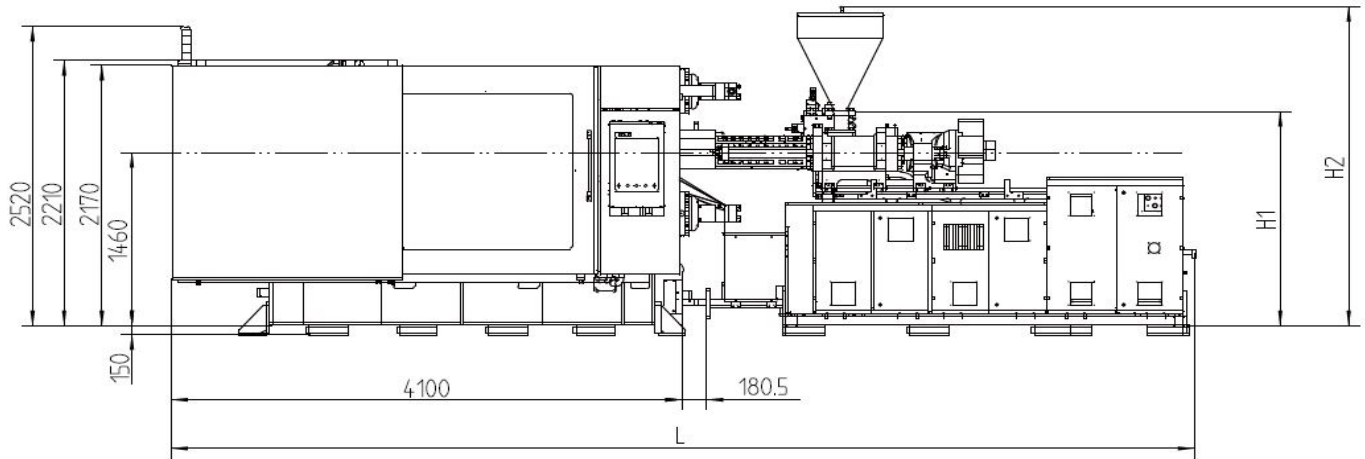
INJECTION UNIT		2695			3330			4800			6800		
		A	B	C	A	B	C	A	B	C	A	B	C
Screw diameter	mm	68	76	84	76	84	92	84	92	108	92	100	116
Shot volume	cm <sup>3</sup>	1198	1497	1829	1678	2050	2460	2217	2659	3664	3191	3770	5073
Shot weight	g	1103	1377	1683	1544	1886	2263	2039	2446	3371	2936	3468	4667
Injection pressure	MPa	225	180	147	199	162	136	218	181	131	213	180	134
Screw L:D ratio		22.3	20	20	22.1	20	20	21.9	20	20	21.7	20	20
Injection rate	cm <sup>3</sup> /s	383	478	584	430	526	632	516	619	853	615	726	980
Max. injection speed	mm/s	105			95			93			92.5		
Screw stroke	mm	330			370			400			480		
Max. screw speed	r/min	184			147			154			145		
Barrel heating zone no.	PCS	6			6			6			7		

CLAMPING UNIT													
Clamping force	kN	7000											
Opening force	kN	500											
Platen size	mm	1510 x 1440											
Distance between tie-bars	mm	1100 x 960											
Mould thickness (min-max)	mm	450 - 950											
Opening stroke	mm	1450 / 950											
Max. daylight	mm	1900											
Ejector force	kN	110											
Ejector stroke	mm	250											
Ejector number	PCS	21											

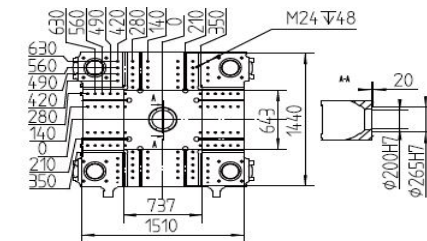
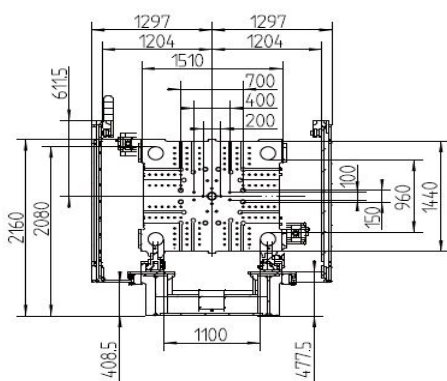
ELECTRICAL & HYDRAULIC UNITS													
System pressure	MPa	17.5 / 30			17.5 / 30			17.5 / 30			17.5 / 30		
Pump motor	kW	60 + 7.5			60 + 7.5			66 + 7.5			89 + 7.5		
Total power	kW	93.9	93.9	98.4	100.6	100.6	103.7	111.3	111.3	120.5	138.5	138.5	147.5
Heater power	kW	26.4	26.4	30.9	33.1	33.1	36.2	37.82	37.82	47	42	42	51

GENERAL													
Oil tank capacity	L	750			750			1000			1150		
Machine dimensions (LxWxH)	m	7.8 x 3 x 2.6			7.8 x 3 x 2.6			9 x 3 x 2.7			9 x 3 x 2.9		
Machine weight	T	16 + 5			16 + 5.5			16 + 6.5			16 + 8.5		
Max. mould weight	T	11			11			11			11		

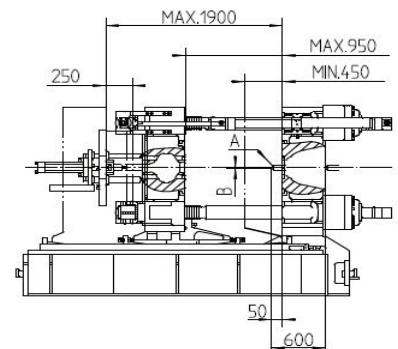
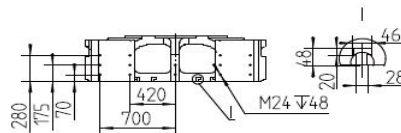
## MACHINE DIMENSIONS



## PLATEN DRAWINGS



Robot mounting holes according to Euromap 18



Model	A	B	L	H1	H2	W	Main power cord size	Full-load current	Bearing capacity of foundation	Number of cooling water	Cooling water flow (mold excluded)	Cooling water pressure	Compressed air pressure
	mm	mm	mm	mm	mm	mm	mm <sup>2</sup>	A	t/m <sup>2</sup>	n×L/min	L/min	bar	bar
UN700D1-U2695	SR15	Φ4	7800	1740	2600	2198	70	176.74	8	(8+8)×11	150	3~4	5~6
UN700D1-U3330	SR15	Φ4	7800	1740	2630	2198	70	186.89	8	(8+8)×11	150	3~4	5~6
UN700D1-U4800	SR15	Φ4.5	9000	1818	2660	2198	70	215.49	8	(8+8)×11	150	3~4	5~6
UN700D1-U6800	SR15	Φ4.5	9000	1991	2850	2198	95	259.84	8	(8+8)×11	150	3~4	5~6