

UN2700DP Specifications

FEATURES

- › Japanese Yuken dual displacement piston pump with servo drive saves between 20% and 60% energy compared to a variable displacement pump
- › User friendly and renowned Austrian manufactured KEBA controller
- › European based design
- › Ceramic heater bands
- › T-slot platens
- › Warranty supported by UK based engineers
- › Open ejector cylinder design which is maintenance friendly
- › Diagonally located high-speed cylinders for faster mould opening and closing
- › High-rigidity platen
- › Non-contact magnetostrictive sensors used for measuring position
- › Low-speed high-torque hydraulic motor for screw drive
- › Sliding shoes designed specifically to support large moulds with two thirds of the mould weight taken by the moving platen
- › Short stroke high-pressure cylinders offer fast pressure build-up and mould protection
- › Non-contact design between tie bars and movable platen for lower maintenance
- › Large areas of safety foot plates aides access
- › Swivelling injection unit shortens the time spent on plasticising unit maintenance
- › Pump and motor unit can be specified to suit the application if required and can lead to further gains in efficiency
- › Tie bar pulling, magnetic platens and quick mould change systems available as options
- › Optional accumulator assisted injection
- › Specific screws for processing different materials can be specified to suit the application



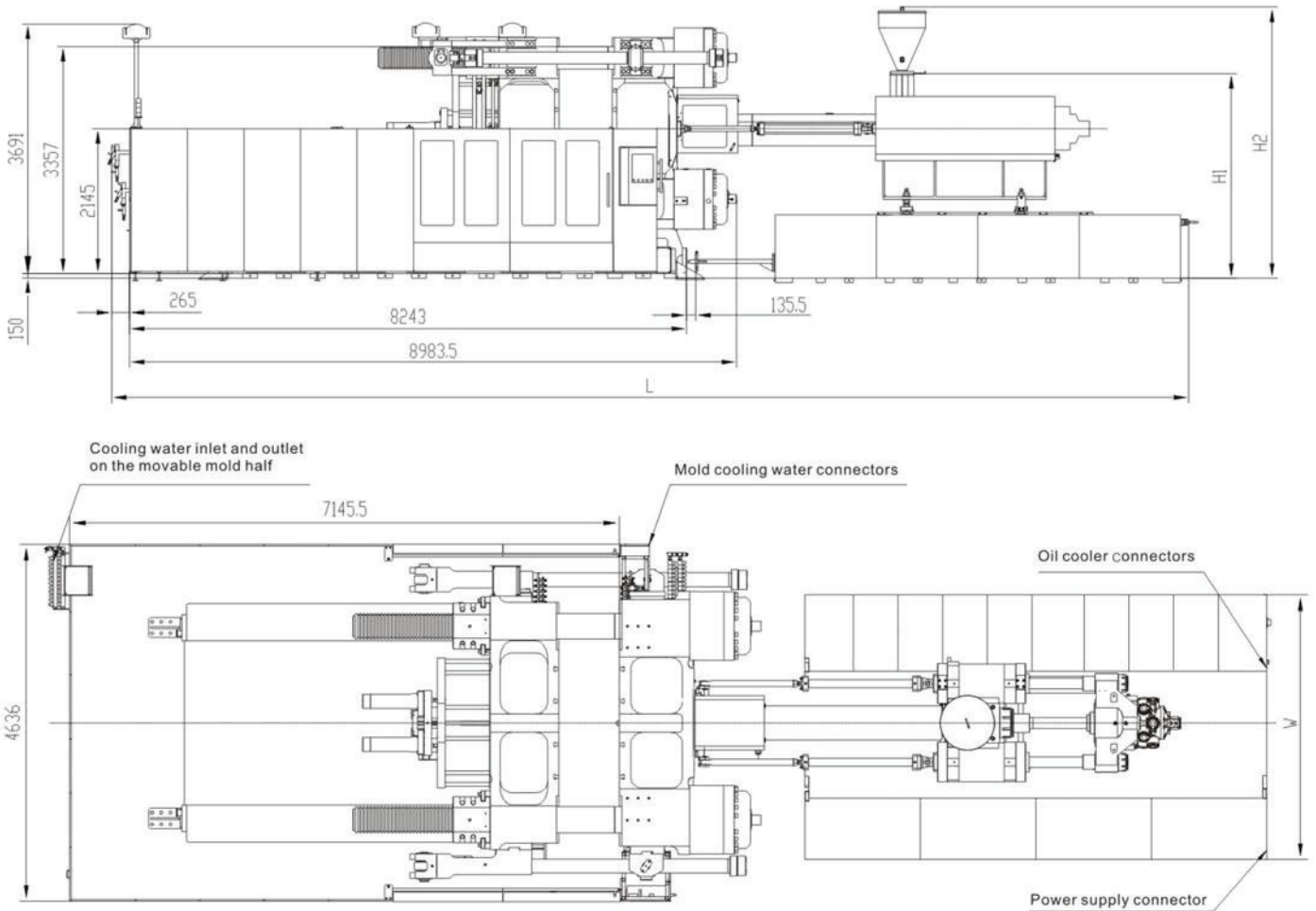
INJECTION UNIT		18500			23750			31750			44500			54500			75500			100000			
		A	B	C	A	B	C	A	B	C	A	B	C	A	B	C	A	B	C	A	B	C	
Screw diameter	mm	135	145	155	145	155	165	155	165	180	180	190	200	190	200	215	215	230	245	230	245	260	
Theoretical shot volume	cm ³	10020	11559	13208	12385	14152	16037	15661	17747	21121	23666	26368	29217	28353	31416	36305	41025	46949	53272	56089	63644	71675	
Shot weight	g	9218	10634	12152	11394	13020	14756	14407	16327	19430	21536	23995	26588	25803	28590	33038	37335	42725	48478	51043	57918	65225	
Injection pressure	Mpa	184	160	140	192	168	148	203	179	150	189	169	153	193	174	151	185	161	142	183	161	143	
Screw L:D ratio	L/D	23.6	22.0	20.0	23.5	22.0	20.1	23.4	22.1	20.0	23.4	22.1	20.0	23.4	22.1	20.0	23.4	22.1	20.0	23.4	22.1	20.0	
Injection rate	cm ³ /s	1251	1444	1650	1505	1715	1950	1680	1903	2265	2175	2425	2685	1760	1950	2255	2190	2500	2845	2500	2840	3190	
Max. injection speed	mm/s		87.4			91.1			89.0			85.5			62.1			60.3			60.2		
Screw stroke	mm		700			750			830			930			1000			1130			1350		
Max. screw speed	r/min		118			114			122			75			65			62			45		
Screw torque	Nm		18949			24522			28008			33439			46178			55732			76433		
Plasticising rate (PS)	g/s	208	295	343	198	257	303	250	291	336	324	379	416	320	376	450	430	530	599	338	413	450	
Heating capacity	KW		98.52			112.39			126.1			170	183	189	182	189	212	263	270	300	281	300	342
Barrel heating zone no.	PCS		8			10			10			8	9	9	8	9	9	9	10	11	9	10	11
Nozzle contact force	kN		296.7			296.7			296.7			296.7			296.7			296.7			296.7		
Carriage stroke	mm		950			1050			1050			1300			2000			2000			2000		

CLAMPING UNIT																						
Clamping force	kN	2700																				
Opening force	kN	220																				
Platen size	mm	2970x2680																				
Distance between tie-bars	mm	2180x1755																				
Mould thickness	mm	790-2010																				
Max. opening stroke	mm	3110																				
Max. daylight	mm	3900																				
Ejector force	kN	460																				
Ejector stroke	mm	500																				
Ejector number	PCS	33																				

ELECTRICAL & HYDRAULIC UNITS																																														
System pressure	Mpa	17.5, 25			17.5, 25			17.5, 25			17.5, 25			17.5, 25			17.5, 25			17.5, 25																										
Motor	kW	60x3			60x3 + 55.6			60x4 + 55.6			60x5 + 39.4			60x6 + 39.4			60x7 + 39.4			60x7 + 39.4																										
Pump flow	L/min	800			1000			1230			1584			1872			2160			2160																										
Total power	kW	274.92			348			421.7			509.4			522.4			528.4			542			549			572			683			701			720			701			720			762		

GENERAL																									
Oil tank capacity	L	2500			3200			4000			4000			5300			5300			5300			5300		
Dry cycle	s/mm	12/1526			11.5/1526			11/1526			10.5/1526			10.5/1526			10/1526			10/1526			10/1526		
Max. Mould weight	T	75			75			75			75			75			75			75			75		
Machine weight (clamping + injection units, without oil)	T	114+22			114+23			114+37			114+41			114+60			114+60			114+60			114+65		
Machine dimensions (LxWxH)	m	15.1x4.6x3.9			15.5x4.6x4.0			17.0x4.9x4.1			18.5x4.9x4.3			20.0x4.9x4.4			21.5x4.9x4.5			23.0x4.9x4.6			23.0x4.9x4.6		

MACHINE DIMENSIONS



PLATEN DRAWINGS

